

RAMA

Contractors
(Punctual Perfection)

- **Engineers**
- **Builders**
- **Designers**
- **Turnkey Projects**



➤ **CIVIL CONSTRUCTION**

➤ **FIRE FIGHTING WORKS**

➤ **PEB/STEEL STRUCTURE**

➤ **PLUMBING WORKS**

➤ **ELECTRICAL WORKS**

➤ **DESIGN & DETAILED ENGINEERING**

**CONTACT
US :**



**+919784985187
+919216895849**



rama.projects04@gmail.com



www.ramacontractors.in

“Our Goal then and now is to provide quality on time.”

ABOUT RAMA

GREETINGS & WELCOME TO "RAMA CONTRACTORS".

This company is founded by **Mr. Muktyar** and managed by **Mr. Rohit Yadav**. RAMA have worked in different-different type of construction fields, eminent architect from different state. due to our varied technical and commercial resources. We are able to deliver **OUR TURNKEY SERVICES** within short span of time.



OUR EXPERTISE : is in civil construction, consultancy and architectural services for industrial and non industrial R.C.C. Buildings, PEB or Steel Structure Buildings, Electrical HT/LT projects, Fire Fighting Works, Plumbing works

We provide a complete **"Turnkey solutions"** where Clients are desirous of **A Single Window Solution** For The Entire Project. As **"Turnkey projects"**

We Provide Cost Effective Constructional Solutions.

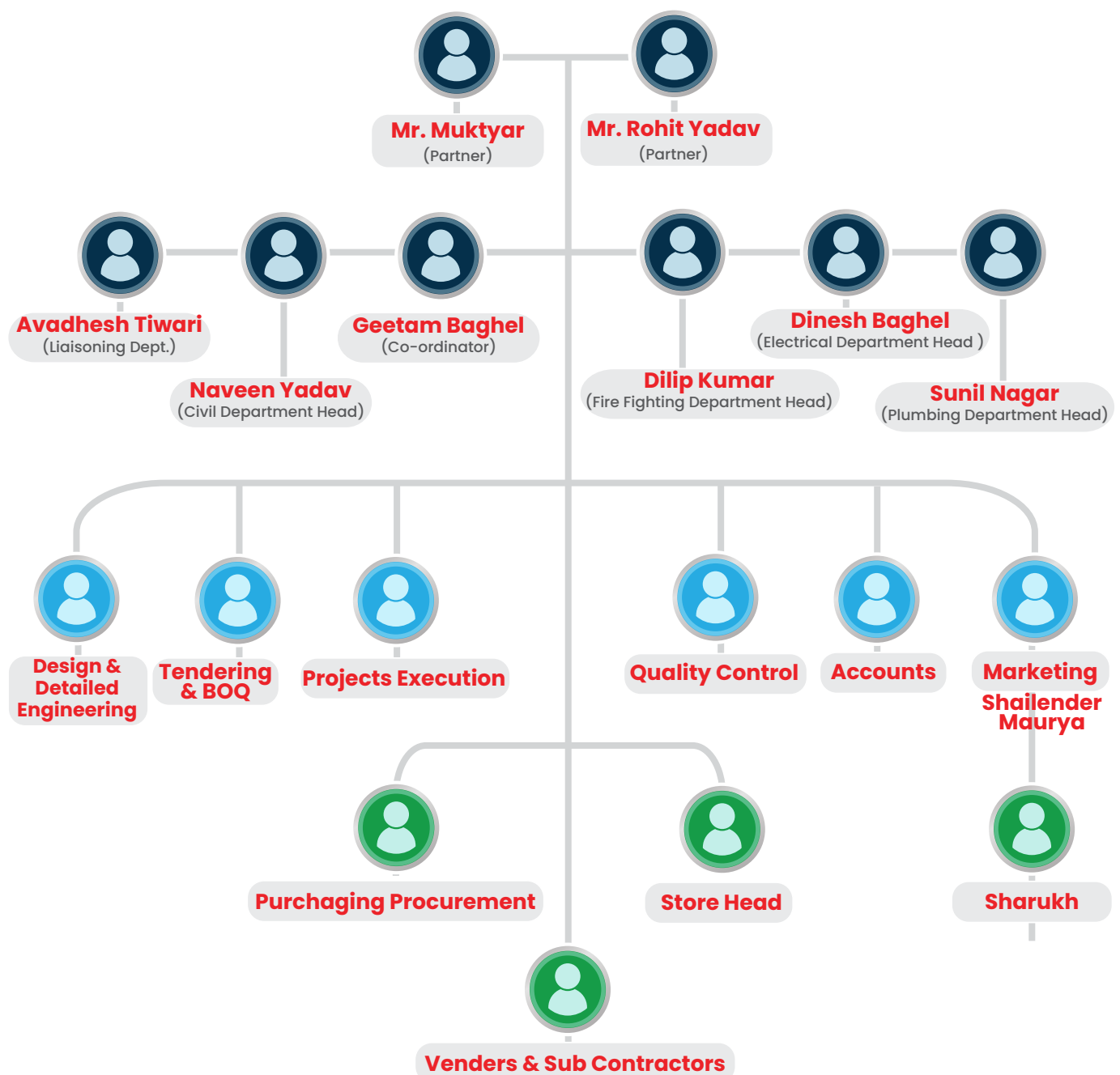
Our aim is to reduce all over project cost with best quality as per requirements of our clients.

RAMA TEAM

Team Work is essential for any Construction Project as it involves Communication, Co-ordination, Collaboration, Planning, Monitoring, Control, Maintenance and Operation.

A Project that is well Co-ordinated and executed is a result of effective team work.

With our team it is possible to us to deliver any task on time and responsibilities which ensure that everyone is working towards same Project.



WHY CHOOSE US

➤ **Personalized Technical Services to customers**

Its all about to understanding clients requirements, their specific needs, their interests, what they want. And provide them best solutions for their project using advance technologies by Collecting relevant data and anticipate their future needs.

➤ **You can depend on us**

We ensure that construction or any project work progress is properly planned and completed within the define guidelines set out in the scope of work.

➤ **Our Continuity**

We will always available during and after for our services & our promises for any work delivered by us.

➤ **Quality Policy**

We ensure that our delivered work meet all the requirements by inspections, testing's, using checklists, standard Codes, workmanship and safe operations.

➤ **Mission**

To perform for our clients the highest level of quality construction Turnkey services on time at fair and market competitive Rates.

➤ **Vision**

Delivering Construction services beyond boundaries.

Listen better, Plan better, Build better.



OUR SERVICES

let the construction begins ..

Having team who known for planning, Co-ordinating, supervising construction projects from start to Handover.



**CIVIL
CONSTRUCTION**



**PEB OR STEEL
STRUCTURE
WAREHOUSES**



**DESIGN & DETAILED
ENGINEERING**



**ELECTRICAL HT/LT
WORKS**



FIRE FIGHTING WORKS



PLUMBING WORKS

A single platform for Turnkey projects



OUR SITE VISITES BY CLIENTS, ARCHITECTS, AND PMC



OUR SITE VISITES BY CLIENTS, ARCHITECTS, AND PMC



CIVIL CONSTRUCTION

We are engaged in providing our clients a qualitative Construction Service. The provided service is performed by our highly experienced professionals using superior grade tools and latest technology.



- » FOUNDATIONS
- » EXCAVATION & GRADING
- » BUILDING PADS
- » UNDERGROUND UTILITIES
- » ROADS & PARKING AREAS
- » FLOORING & SLAB WORKS
- » BOUNDARY WALLS
- » EROSION CONTROL



CIVIL CONSTRUCTION

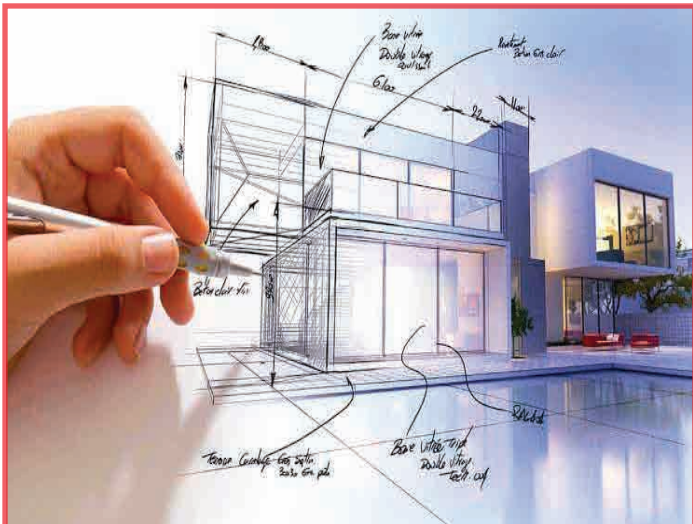
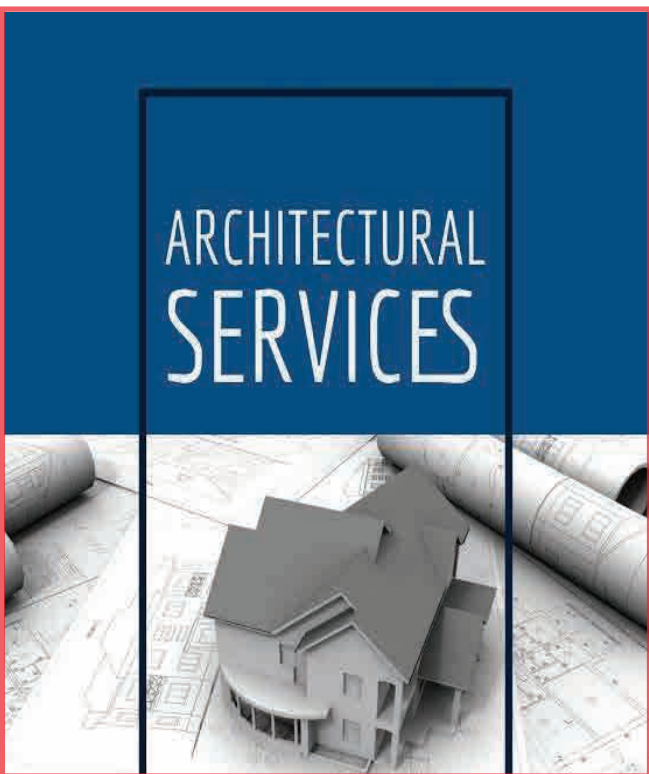


CIVIL CONSTRUCTION



DESIGN & DETAILED ENGINEERING

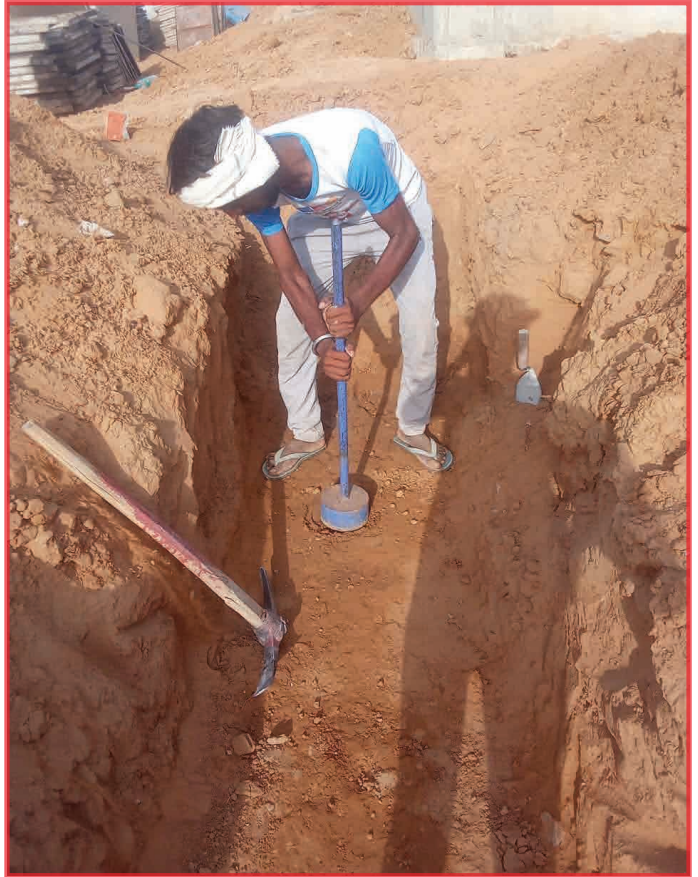
Cost effective solutions resulting in high productivity, while deploying less manpower, Complete project formwork solutions , from foundations onward, Project planning and management services with existing customer inventory, Formwork solutions for complex structures from standard modular equipment.



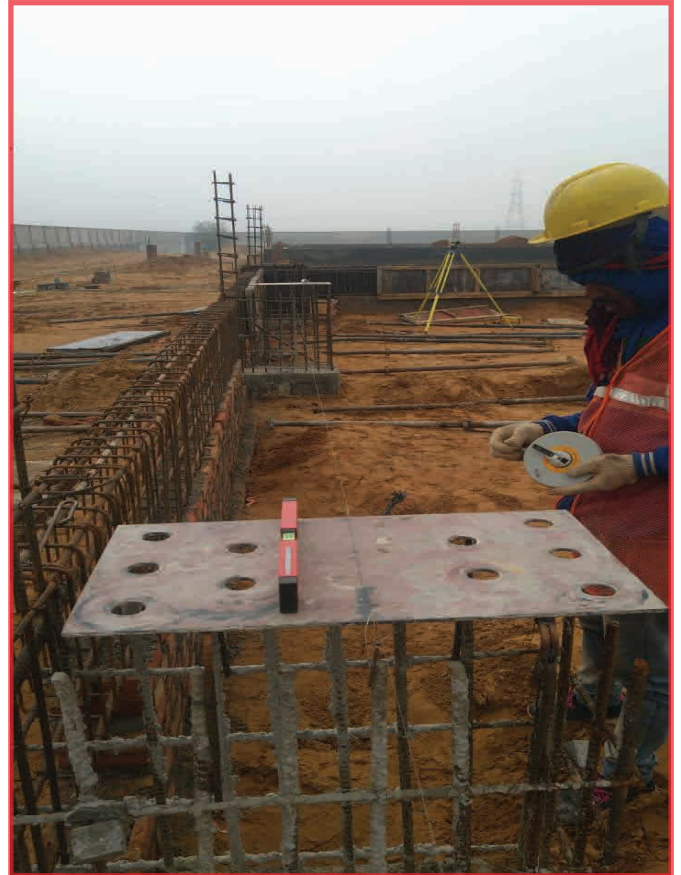
OUR TESTING FACILITIES AT SITE'S



OUR TESTING FACILITIES AT SITE'S



OUR TESTING FACILITIES AT SITE'S



PEB OR STEEL STRUCTURE WAREHOUSES



PEB OR STEEL STRUCTURE WAREHOUSES



ELECTRICAL HT/LT WORKS

Our service range includes a wide range of HT /LT Electrical Project Service Work and Ht Substation Electrical Work 11kv To 66kv.

 33 KV, 11 KV SUB-STATIONS

 CABLE LAYING IN TRENCH OR IN GROUND

 INDUSTRIAL WIRING

 LIGHTING & POWER

 CABLE JOINTING AND TERMINATION

 ERECTION OF PERFORATED TRAY, LADDER TRAY

 EARTHING & EARTH GRIDS

 EARTHING & EARTH GRIDS

 INSTALLATION OF LT & HT PANEL

 LIGHTNING ARRESTER INSTALLATION

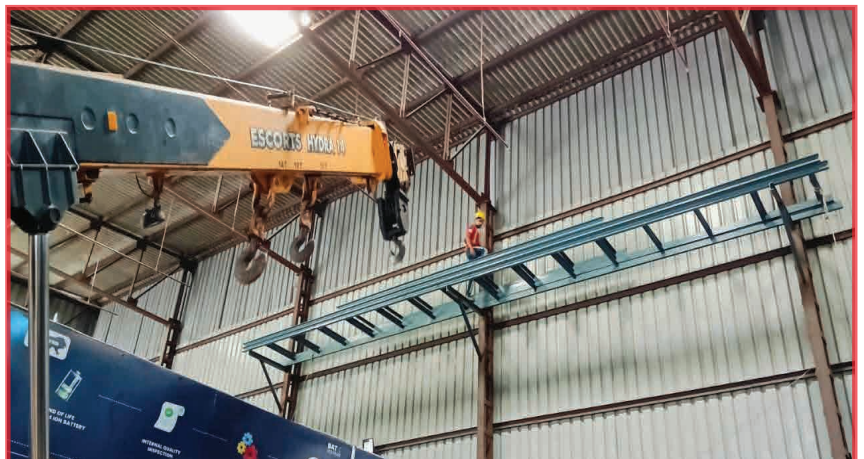
 SERVICE MAINTENANCE & TESTING

 INSTALLATION OF CCTV SYSTEM

 FABRICATION OF MS STRUCTURE FOR MACHINE STAND, TRAY, FAN SUPPORT

 STREET LIGHT POLE INSTALLATION

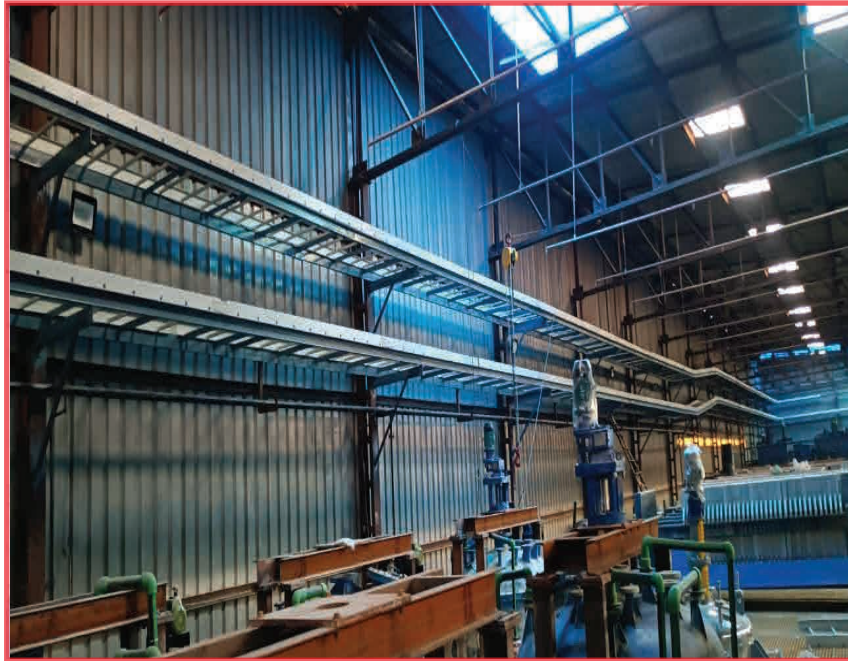
 ELECTRICAL DESIGN & TESTING



ELECTRICAL HT/LT WORKS



ELECTRICAL HT/LT WORKS



FIRE FIGHTING

Hazard Analysis / Assessment & Customized Fire Protection Solutions

-  FIRE AUDIT SURVEY
-  RISK ANALYSIS
-  CONSULTANCY & TRAINING
-  SYSTEM DESIGN & ENGINEERING
-  EQUIPMENT PROCUREMENT &
-  SUPPLY INSTALLATION & COMMISSIONING
-  MONITORING & ONGOING MAINTENANCE
-  MEDIUM & HIGH VELOCITY WATER SPRAY SYSTEM
-  INTELLIGENT ADDRESSABLE FIRE DETECTION & ALARM SYSTEM
-  LOW PRESSURE CARBON DIOXIDE SYSTEM
-  HIGH PRESSURE CARBON DIOXIDE SYSTEM
-  CLEAN AGENT BASED FIRE SUPPRESSION SYSTEM (FM200, NAF
-  HYDRANT & SPRINKLER SYSTEM



FIRE FIGHTING



PLUMBING WORKS

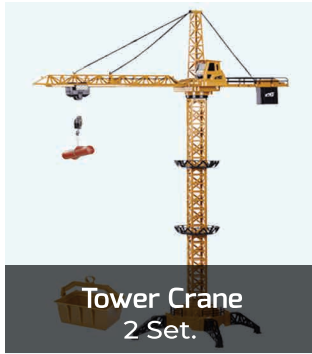
Refers to the Supply and installation of Pipes, Sanitary Fixtures & C.P. fittings, drainage system, soil waste, vent and rain water pipes & fittings, water supply system, sewerage system, pumping system used for water distribution and disposal in buildings.



PLUMBING WORKS



TOOLS MACHINERY



Tower Crane
2 Set.



Dumper
4 Nos.



Mixture Machine
4 Nos.



Vibrators
14 Nos.



Bricks Testing Machine
06 Nos.



Auto Level
11 Set.



Welding Machine
09 Set.



Cube Testing Machine
06 Nos.



Tractor Torlly Set
07 Set.



Steel Cutter Machine
06 Set.



Steel Jacker Machine
16 Set.



Scaffolding
145000 Sft.



Mini Lift Machine
07 Set.



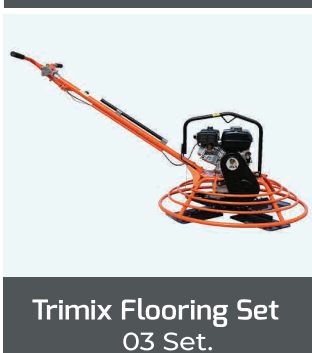
Jacks & Channels
800 Nos.



Ajax Fiori (4cum)
03 Nos.



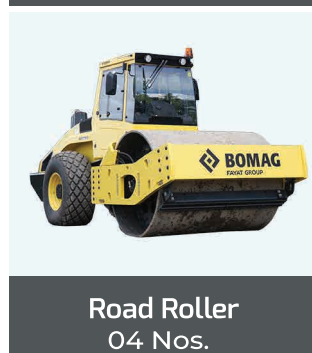
Excavator (JCB 3Dx)
03 Nos.



Trimix Flooring Set
03 Set.



Vacuum Dewatering Pump- 04 Nos.



Road Roller
04 Nos.



(Theodolite Toatal Station) 05 Set.

HEALTH & SAFETY

At RAMA CONTRACTOR Quality, Occupational Health, Safety & Environmental concerns are integral to its business of Construction Management. In pursuit of the above RAMA CONTRACTOR is committed to:

01

Comply with all applicable legal and other requirements connected with Q H S & Environmental matters.

02

By adopting relevant technology and implement measures to maintain Safe working and Occupational Health standards.

03

Create awareness on QHS & Environment by training.

04

Continual Improvement in QHS and Environmental performance. Prevent pollution through planned objectives and targets.

05

Continuous prevention of pollution, injuries and ill health through training programmes.

06

Provide utmost quality work and services to attain customer satisfaction.



RAMA COMPLETED PROJECTS



Radhey Biotech Pvt. Ltd. (Kamdhenu)
(Udaipur - Rajasthan)



Palra Estate Pvt. Ltd. (Vertical Warehousing)
(Jhajjar - Haryana)



Norton Chemicals & Specialties Pvt. Ltd. (NPL blue sky automotive, Nandan Group, Adblue)
(Udaipur - Rajasthan)

RAMA COMPLETED PROJECTS



KRN Heat Exchanger & Refrigeration limited
(Neemrana - Rajasthan)



Surya International Enterprise Pvt Ltd
(Ghiloth - Rajasthan)



RAMA COMPLETED PROJECTS



Kaynes Technology
(Manesar- Gurgaon)



New Era Milk Foods India Private Limited
(Chhapar Ghata - Kanpur, U.P.)



Batx Energies Private Limited Unit
(Sikandrabad - U.P.)

RAMA COMPLETED PROJECTS



Clean Drop Filtration India Pvt Ltd
(Badli - Jhajjar)



Sleep Management Pvt Ltd
(Kehrani, Bhiwadi - Rajasthan)



LAvish Surface (Somani Tiles)
(Ghilothe - Rajasthan)

RAMA COMPLETED PROJECTS



EICHER POLARIS PVT. LTD.
(KUKAS, JAIPUR, RAJ.)



TRANS ACNR - JTAC, UNIT - 1
(SHAHJAHANPUR)

RAMA COMPLETED PROJECTS



**TRANS ACNR UNIT-3,
(GHILOTH)**



**TRANS ACNR UNIT-3,
(GHILOTH)**



**Barmalt Malting (India) Pvt. Ltd.
(Ganganagar - Rajasthan)**



C o n t r a c t o r s



THANKS FOR STAY WITH US

We take great pride in everything that we do, complete control over projects allows us to ensure our customers receive the best quality service.

GET IN TOUCH



+919784985187
+919216895849



www.ramacontractors.in



rama.projects04@gmail.com
info@ramacontractors.in



Corporate Office Add :- Chopanki Main Road, Phalsa, Near Khubi Sarpanch Residance, Bhiwadi, Alwar, Rajasthan



Registered Add :- Shop No. 1, Jumla Crane, Gadpur, Alwar, Rajasthan 301707